



EUROPEAN CITIES AND REGIONS NETWORKING
FOR INNOVATIVE TRANSPORT SOLUTIONS

Cooperation between Polis and the WHO's Transport Health and Environment, Pan European Programme (THE PEP)

Polis Working Group
Environment and Health in Transport
Brussels - 19 September 2013

Paul Curtis
London European Partnership for Transport

Polis – THE PEP Cooperation

Strategic Development

- Polis, WHO et al co-authors of position paper FAO EC advocating greater coordination between T, H & E on active travel initiatives (2011-12).
- Polis presentation THE PEP Symposium Nov 2012
 - Improving air quality through active mobility in cities
- Participation in THE PEP Extended Bureau ensuring city level input to THE PEP action plan

Polis – THE PEP Cooperation

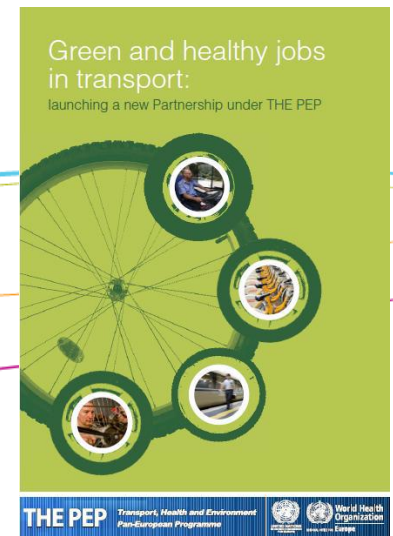
THE PEP Tools

- HEAT – raising awareness amongst Polis cities
- www.heatwalkingcycling.org/
- New HEAT extra value to cities (ready April 2014):
 - Measures economic value of morbidity avoided not just mortality
 - Adjoining tool which will measure impact on Co2
- PASTA project – Polis and WHO partners of this project which examines the health impact of increase active travel, such as through increased infrastructure provision. FP7.

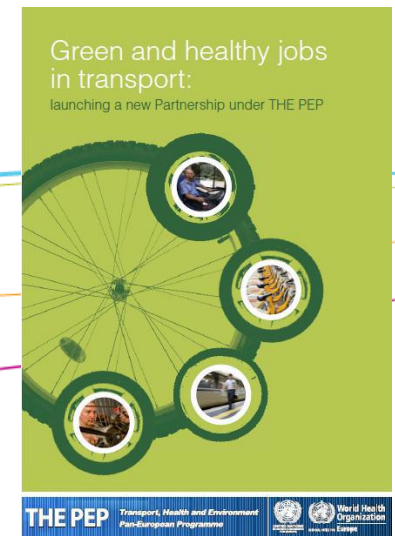
Polis – THE PEP Cooperation

THE PEP Tools

- Green and Healthy Jobs in Transport
 - Large desktop study pooling examples of job creation
 - Justify investment in active travel on basis of economic development
 - Useful tools for cities and mayors steering sustainable urban mobility plans



Polis – THE PEP Cooperation



THE PEP Tools

- Polis contribution of case studies from Polis cities (via Sustrans and LEPT)
 - Cycle hire scheme, electric vehicles industry, infra...
- Second stage will allow broader contributions from Polis cities and strengthen evidence basing for Mayors, planners and engineers
- Scope to work with Polis WG Social & Economic Aspects of Transport

Polis – THE PEP Cooperation

THE PEP Tools

- Clearing House www.thepep.org/CHWebSite/
 - Transport, Health and Environment resource (EN, FR, RU)
 - Policy, Legislation, Case Studies, Research, Indicators, Capacity Building
 - In redevelopment
 - Case study contributions made by Polis, scope for much more and linkages with Polis website, Pas-Port to Mobility (CIVITAS), Eltis, TEMS and Max Eva databases. Training/ Mayoral exchanges?
 - Scope to steer the agenda

THE PEP Clearing House

<p>Drier</p> <p>News and events</p> <p>Information tree</p> <p>Submit information</p> <p>Links</p> <p>Help</p> <p>Feedback</p> <p>THE PEP Toolbox</p>	<h2>Environmental and Health effects of transport</h2>			
<p>Search!</p>	<p>Pollution and noise</p> <p>Air pollution</p> <p>Water pollution</p> <p>Noise</p> <p>Assessment tools and procedures</p>	<p>Landscape and nature</p> <p>Habitat fragmentation</p> <p>Species</p> <p>Natural heritage</p> <p>Assessment tools and procedures</p>	<p>Road traffic injuries</p> <p>Risk factors</p> <p>Figures and costs</p> <p>Vulnerable groups</p> <p>Prevention measures</p> <p>Targets</p>	<p>Physical inactivity</p> <p>Health effects</p> <p>Strategies: healthy means of transport</p> <p>Supportive policies</p>
<p>Print this page</p>	<h3>THE integration</h3>	<h3>Urban transport</h3>	<h3>Demand management</h3>	<h3>Cross-cutting issues</h3>
<p></p> <p></p>	<p>Strategies</p> <p>National strategies</p> <p>Action plans</p> <p>Capacity building</p> <p>Implementation</p> <p>Institutional mechanisms</p> <p>Assessment tools and procedures</p> <p>Representative decision-making</p> <p>Public awareness and participation</p> <p>Monitoring and assessment tools</p> <p>Environmental impact assessment</p> <p>Strategic environmental assessment</p> <p>Health Impact Assessment</p> <p>Benchmarking</p> <p>Reporting</p> <p>Capacity building</p> <p>Information dissemination</p> <p>Exchange of good practices</p> <p>Secondment and training</p> <p>Twinning projects</p>	<p>Public transport</p> <p>Benefits</p> <p>Bus and rail</p> <p>Performance of services</p> <p>Institutions and organisation</p> <p>Urban planning</p> <p>Infrastructure and accessibility</p> <p>Assessment tools and procedures</p> <p>Private cars</p> <p>Effects</p> <p>Congestion</p> <p>Standards</p> <p>Facilities and services</p> <p>Behaviour</p> <p>Assessment tools and procedures</p> <p>Walking and cycling</p> <p>Benefits and risks</p> <p>Target groups</p> <p>Urban planning</p> <p>Infrastructure</p> <p>Services, equipment and marketing</p> <p>Assessment tools</p> <p>Urban traffic safety</p> <p>Impacts</p> <p>Prevention and response</p> <p>Political targets and indicators</p> <p>Assessment tools and procedures</p>	<p>Modal split</p> <p>Information/knowledge management</p> <p>Maritime transport</p> <p>Rail transport</p> <p>Aviation</p> <p>Subsidies</p> <p>Transport/economic growth decoupling</p> <p>Investment policies</p> <p>Push and pull measures</p> <p>Assessment tools and procedures</p> <p>Transport planning</p> <p>Land use plans</p> <p>Sustainable urban transport plans</p> <p>Local and regional plans</p> <p>Enterprise mobility management</p> <p>Taxation and regulation</p> <p>Internalisation of costs</p> <p>Car ownership taxation</p> <p>Fuel taxation</p> <p>Eco-driving</p> <p>Driver behaviour</p> <p>Technical standards</p> <p>Training</p>	<p>Ecologically sensitive areas</p> <p>Criteria</p> <p>Transport demand management</p> <p>Case-studies: alpine region and lakes</p> <p>Children and other vulnerable road users</p> <p>Children</p> <p>Seniors</p> <p>Disabled</p> <p>Specific issues of EECCA countries</p> <p>Countries with economies in transition</p> <p>Specific needs and advantages</p> <p>Regional differentiation</p>

Polis – THE PEP Cooperation

EU Project Partners

- PASTA project – Polis and WHO partners of this project which examines the health impact of increase active travel, such as through increased infrastructure provision. FP7.
- Horizon 2020 offers more potential for Polis and Polis cities to join with WHO as project partners

Polis – THE PEP Cooperation

Integrating International, National and Local Levels

- THE PEP Fourth High Level Meeting (4HLM)
 - Paris, April 2014
 - Culminates in the Paris Declaration setting the objectives for the next period.
 - » New Priority Goal (5th) set to be: “To integrate urban and spatial planning policies with Transport Health and Environmental needs”
 - Will strengthen lobbying potential of European Commission
 - » Draft Declaration includes an article stressing the importance of THE PEP working with city networks
 - Polis will be present at 4HLM ensuring city level coverage and providing city-level speaker suggestions

Polis – THE PEP Cooperation

THE PEP – Polis Cooperation

- Formal Cooperation Agreement due Nov13 – Apr14
- Future areas of cooperation:
 - Joint lobbying on EC policy and funding
 - EU funding bidding partners with Polis cities & PASTA
 - THE PEP tools – continued joint development & promo
 - Participation at mutual conferences and seminars
 - Scan for other mutual ventures: Healthy Cities...
 - Deliver consistent messaging ensuring link between national and local level integration on T, H and E

Polis – THE PEP Cooperation

THE PEP

www.thepep.org

Paul Curtis

London European Partnership for Transport

paul.curtis@lept-eu.org